



---

# OCS Client for Java Compatible Systems

## User's Guide

v1.0

Copyright © Gary Brewer 2000, 2001. All Rights Reserved.  
OCS Client v1.0 distributed under the terms of the GNU General Public License.

## GNU GENERAL PUBLIC LICENSE

### TERMS AND CONDITIONS FOR COPYING, DISTRIBUTION AND MODIFICATION

0. This License applies to any program or other work which contains a notice placed by the copyright holder saying it may be distributed under the terms of this General Public License. The "Program", below, refers to any such program or work, and a "work based on the Program" means either the Program or any derivative work under copyright law: that is to say, a work containing the Program or a portion of it, either verbatim or with modifications and/or translated into another language. (Hereinafter, translation is included without limitation in the term "modification".) Each licensee is addressed as "you".

Activities other than copying, distribution and modification are not covered by this License; they are outside its scope. The act of running the Program is not restricted, and the output from the Program is covered only if its contents constitute a work based on the Program (independent of having been made by running the Program). Whether that is true depends on what the Program does.

1. You may copy and distribute verbatim copies of the Program's source code as you receive it, in any medium, provided that you conspicuously and appropriately publish on each copy an appropriate copyright notice and disclaimer of warranty; keep intact all the notices that refer to this License and to the absence of any warranty; and give any other recipients of the Program a copy of this License along with the Program.

You may charge a fee for the physical act of transferring a copy, and you may at your option offer warranty protection in exchange for a fee.

2. You may modify your copy or copies of the Program or any portion of it, thus forming a work based on the Program, and copy and distribute such modifications or work under the terms of Section 1 above, provided that you also meet all of these conditions:

- a) You must cause the modified files to carry prominent notices stating that you changed the files and the date of any change.
- b) You must cause any work that you distribute or publish, that in whole or in part contains or is derived from the Program or any part thereof, to be licensed as a whole at no charge to all third parties under the terms of this License.
- c) If the modified program normally reads commands interactively when run, you must cause it, when started running for such interactive use in the most ordinary way, to print or display an announcement including an appropriate copyright notice and a notice that there is no warranty (or else, saying that you provide a warranty) and that users may redistribute the program under these conditions, and telling the user how to view a copy of this License. (Exception: if the Program itself is interactive but does not normally print such an announcement, your work based on the Program is not required to print an announcement.)

These requirements apply to the modified work as a whole. If identifiable sections of that work are not derived from the Program, and can be reasonably considered independent and separate works in themselves, then this License, and its terms, do not apply to those sections when you distribute them as separate works. But when you distribute the same sections as part of a whole which is a work based on the Program, the distribution of the whole must be on the terms of this License, whose permissions for other licensees extend to the entire whole, and thus to each and every part regardless of who wrote it.

Thus, it is not the intent of this section to claim rights or contest your rights to work written entirely by you; rather, the intent is to exercise the right to control the distribution of derivative or collective works based on the Program.

In addition, mere aggregation of another work not based on the Program with the Program (or with a work based on the Program) on a volume of a storage or distribution medium does not bring the other work under the scope of this License.

3. You may copy and distribute the Program (or a work based on it, under Section 2) in object code or executable form under the terms of Sections 1 and 2 above provided that you also do one of the following:

- a) Accompany it with the complete corresponding machine-readable source code, which must be distributed under the terms of Sections 1 and 2 above on a medium customarily used for software interchange; or,
- b) Accompany it with a written offer, valid for at least three years, to give any third party, for a charge no more than your cost of physically performing source distribution, a complete machine-readable copy of the corresponding source code, to be distributed under the terms of Sections 1 and 2 above on a medium customarily used for software interchange; or,
- c) Accompany it with the information you received as to the offer to distribute corresponding source code. (This alternative is allowed only for noncommercial distribution and only if you received the program in object code or executable form with such an offer, in accord with Subsection b above.)

The source code for a work means the preferred form of the work for making modifications to it. For an executable work, complete source code means all the source code for all modules it contains, plus any associated interface definition files, plus the scripts used to control compilation and installation of the executable. However, as a special exception, the source code distributed need not include anything that is normally distributed (in either source or binary form) with the major components (compiler, kernel, and so on) of the operating system on which the executable runs, unless that component itself accompanies the executable.

If distribution of executable or object code is made by offering access to copy from a designated place, then offering equivalent access to copy the source code from the same place counts as distribution of the source code, even though third parties are not compelled to copy the source along with the object code.

4. You may not copy, modify, sublicense, or distribute the Program except as expressly provided under this License. Any attempt otherwise to copy, modify, sublicense or distribute the Program is void, and will automatically terminate your rights under this License. However, parties who have received copies, or rights, from you under this License will not have their licenses terminated so long as such parties remain in full compliance.

5. You are not required to accept this License, since you have not signed it. However, nothing else grants you permission to modify or distribute the Program or its derivative works. These actions are prohibited by law if you do not accept this License. Therefore, by modifying or distributing the Program (or any work based on the Program), you indicate your acceptance of this License to do so, and all its terms and conditions for copying, distributing or modifying the Program or works based on it.

6. Each time you redistribute the Program (or any work based on the Program), the recipient automatically receives a license from the original licensor to copy, distribute or modify the Program subject to these terms and conditions. You may not impose any further restrictions on the recipients' exercise of the rights granted herein. You are not responsible for enforcing compliance by third parties to this License.

7. If, as a consequence of a court judgment or allegation of patent infringement or for any other reason (not limited to patent issues), conditions are imposed on you (whether by court order, agreement or otherwise) that contradict the conditions of this License, they do not excuse you from the conditions of this License. If you cannot distribute so as to satisfy simultaneously your obligations under this License and any other pertinent obligations, then as a consequence you may not distribute the Program at all. For example, if a patent license would not permit royalty-free redistribution of the Program by all those who receive copies directly or indirectly through you, then the only way you could satisfy both it and this License would be to refrain entirely from distribution of the Program.

If any portion of this section is held invalid or unenforceable under any particular circumstance, the balance of the section is intended to apply and the section as a whole is intended to apply in other circumstances.

It is not the purpose of this section to induce you to infringe any patents or other property right claims or to contest validity of any such claims; this section has the sole purpose of protecting the integrity of the free software distribution system, which is implemented by public license practices. Many people have made generous contributions to the wide range of software distributed through that system in reliance on

consistent application of that system; it is up to the author/donor to decide if he or she is willing to distribute software through any other system and a licensee cannot impose that choice.

This section is intended to make thoroughly clear what is believed to be a consequence of the rest of this License.

8. If the distribution and/or use of the Program is restricted in certain countries either by patents or by copyrighted interfaces, the original copyright holder who places the Program under this License may add an explicit geographical distribution limitation excluding those countries, so that distribution is permitted only in or among countries not thus excluded. In such case, this License incorporates the limitation as if written in the body of this License.

9. The Free Software Foundation may publish revised and/or new versions of the General Public License from time to time. Such new versions will be similar in spirit to the present version, but may differ in detail to address new problems or concerns.

Each version is given a distinguishing version number. If the Program specifies a version number of this License which applies to it and "any later version", you have the option of following the terms and conditions either of that version or of any later version published by the Free Software Foundation. If the Program does not specify a version number of this License, you may choose any version ever published by the Free Software Foundation.

10. If you wish to incorporate parts of the Program into other free programs whose distribution conditions are different, write to the author to ask for permission. For software which is copyrighted by the Free Software Foundation, write to the Free Software Foundation; we sometimes make exceptions for this. Our decision will be guided by the two goals of preserving the free status of all derivatives of our free software and of promoting the sharing and reuse of software generally.

#### NO WARRANTY

11. BECAUSE THE PROGRAM IS LICENSED FREE OF CHARGE, THERE IS NO WARRANTY FOR THE PROGRAM, TO THE EXTENT PERMITTED BY APPLICABLE LAW. EXCEPT WHEN OTHERWISE STATED IN WRITING THE COPYRIGHT HOLDERS AND/OR OTHER PARTIES PROVIDE THE PROGRAM "AS IS" WITHOUT WARRANTY OF ANY KIND, EITHER EXPRESSED OR IMPLIED, INCLUDING, BUT NOT LIMITED TO, THE IMPLIED WARRANTIES OF MERCHANTABILITY AND FITNESS FOR A PARTICULAR PURPOSE. THE ENTIRE RISK AS TO THE QUALITY AND PERFORMANCE OF THE PROGRAM IS WITH YOU. SHOULD THE PROGRAM PROVE DEFECTIVE, YOU ASSUME THE COST OF ALL NECESSARY SERVICING, REPAIR OR CORRECTION.

12. IN NO EVENT UNLESS REQUIRED BY APPLICABLE LAW OR AGREED TO IN WRITING WILL ANY COPYRIGHT HOLDER, OR ANY OTHER PARTY WHO MAY MODIFY AND/OR REDISTRIBUTE THE PROGRAM AS PERMITTED ABOVE, BE LIABLE TO YOU FOR DAMAGES, INCLUDING ANY GENERAL, SPECIAL, INCIDENTAL OR CONSEQUENTIAL DAMAGES ARISING OUT OF THE USE OR INABILITY TO USE THE PROGRAM (INCLUDING BUT NOT LIMITED TO LOSS OF DATA OR DATA BEING RENDERED INACCURATE OR LOSSES SUSTAINED BY YOU OR THIRD PARTIES OR A FAILURE OF THE PROGRAM TO OPERATE WITH ANY OTHER PROGRAMS), EVEN IF SUCH HOLDER OR OTHER PARTY HAS BEEN ADVISED OF THE POSSIBILITY OF SUCH DAMAGES.

#### END OF TERMS AND CONDITIONS





# Table of Contents

Prefix .....	9
Contact Information .....	10
Installation .....	11
Java Runtime Environment .....	12
OCS Client .....	13
ocApp.jar .....	13
WW Proxy Server .....	13
ocApp.ico .....	13
readme.txt .....	13
ocApp Users Guide.pdf .....	13
Operation .....	14
System Menu .....	15
Login .....	15
Logout .....	15
Reconnect .....	15
Options .....	16
Exit .....	16
Admin Menu .....	17
Group Members .....	17
Remove From Group .....	17
System Members .....	17
Add to Group as User .....	17
Add to Group as Manager .....	17
Change Password .....	18
Create New Group .....	18
Delete This Group .....	18
Task Menu .....	19
View Tasks .....	19
Create New Task .....	19
File Tree .....	20
Tree Icons .....	20
Tree Menu .....	20
Open File .....	20
File Info .....	20
Delete File .....	20
Create New File .....	20
Create New Directory .....	21
Increment Version .....	21
Decrement Version .....	21
Rename .....	21
Move .....	21
Lock .....	21
Unlock .....	21
Force Unlock .....	21
Delete Directory .....	22
Desktop .....	23
Editing Window .....	23
Editing Window File Menu .....	24



Upload .....	24
Upload + Version Increment .....	24
Upload + Close.....	24
Upload + Version Increment + Close .....	24
Close .....	24
Editing Window Options Menu .....	24
<b>Limitations .....</b>	<b>25</b>

## Prefix

Organisational trends show that companies are increasing the availability of networked computing. Teamwork is becoming commonplace in the working environment. As technology continues to expand a method for supporting tasks that are carried out in groups needs to be satisfied. Groupware has emerged as a technology that can be used to support this.

The OCS software is designed to allow programmers to work on collaborative programming tasks together. The OCS package allows version controlling on system files to overcome collaborative consistency problems. It also prevents awareness problems by not allowing multiple users access to the same source code while working on a project. Communication methods such as task assignment and online chat facilities have been implemented to overcome presence awareness problems.

The manual describes how to use the OCS Client software.

---

## Contact Information

The project is hosted at SourceForge. "SourceForge is a free service to [Open Source](#) developers offering easy access to the best in CVS, mailing lists, bug tracking, message boards/forums, task management, site hosting, permanent file archival, full backups, and total web-based administration."<sup>[SF01]</sup>.

The SourceForge address is -

<http://www.sourceforge.net/projects/openocs/>

The project also has a home page for general information for this project at -

<http://www.openOCS.org>

The author can be contacted at -

[gary@openOCS.org](mailto:gary@openOCS.org)

<sup>[SF01]</sup> SourceForge homepage at <http://www.sourceforge.net>

# Installation

The follow guides the installation process of the OCS Client application and how to connect to an OCS Server.

---

## Java Runtime Environment

To use the OCS Client program you must install Java Runtime Environment Standard Version 1.3. The JRE is available for Windows, Solaris and Linux operating systems. The JRE is available to download from the following site -

<http://java.sun.com/j2se/1.3/jre/>

If your operating system is not supported by JRE 1.3, contact your vendor, they may provide a port of the JRE that is not supported by Java.

---

## OCS Client

The OCS Client archive contains the following files –

- [ocApp Users Guide.pdf](#)
- [ocApp.jar](#)
- [ocApp.ico](#)
- [readme.txt](#)

### ocApp.jar

This is the executable java archive. Provided that the JRE is installed using Java to execute this file will produce the OCS application.

Under the Windows Operating System it is possible to double click on this program to start it.

At the command line it is possible to execute the jar file as –

```
➤ java -jar ocApp.jar
```

### WW Proxy Server

If you use a proxy server to connect to the world wide web it is necessary to provide the proxy server and port as parameters to the program when you execute it. For example if your proxy server is [wwwcache.wmin.ac.uk](#) and resides on port 3128 you would execute the program as –

```
➤ java -jar ocApp.jar wwwcache.wmin.ac.uk 3128
```

### ocApp.ico

For convenience, this icon is provided for Windows users to display an icon for the application.

### readme.txt

This file contains simple installation information and update information from previous versions.

### ocApp Users Guide.pdf

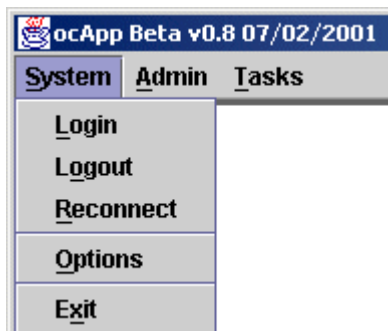
This document.

# Operation

How to use the OCS Client application.

---

## System Menu



The system menu contains the necessary functions to connect and disconnect the application to the OCS Server.

### Login

The login button allows the user to login to the system. A dialog similar to that shown in Figure 1 is displayed when this menu item is selected. The username field should contain the username that has been selected by the user. The password field should contain the password that is selected by the user. The first time logging in from

creation of an account the password field should be left blank. The group is the group you wish to connect to. The group should be set to 'openocs' if this is the first time logging into the system. This dialog will remember the login and group that you have used each time you start the application and open the login dialog box. It will not store your password for security.

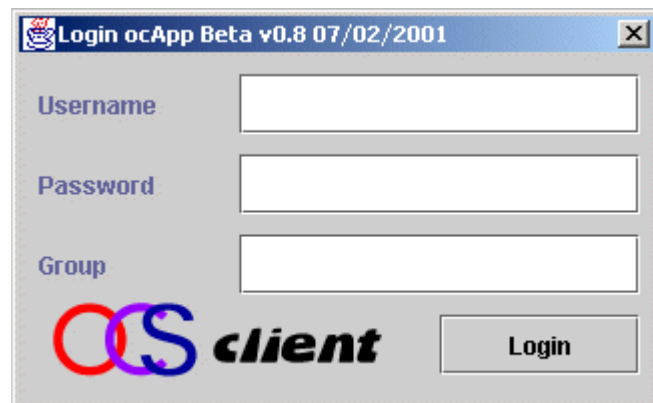


Figure 1

### Logout

The logout button will disconnect you from the system. All open files will be closed (without uploading) and all windows will be closed. The logout button does not close the application

### Reconnect

The reconnect button is used for reconnecting to the current group. If already connected this will close the connection and then reconnect. The reconnect button is useful if the user is experiencing network connection difficulties.



## Options

The options menu item displays an options dialog shown in Figure 2. This dialog is used to set-up the server host and ports that the OCS Server resides on. The server host is the TCP host name or IP address that the OCS Server resides on. The OCS Server Port is the port that the OCS Server is running on. The Connection Server Port is the port the OCS Connection

Server is running on. The system remembers these values when the user clicks save.

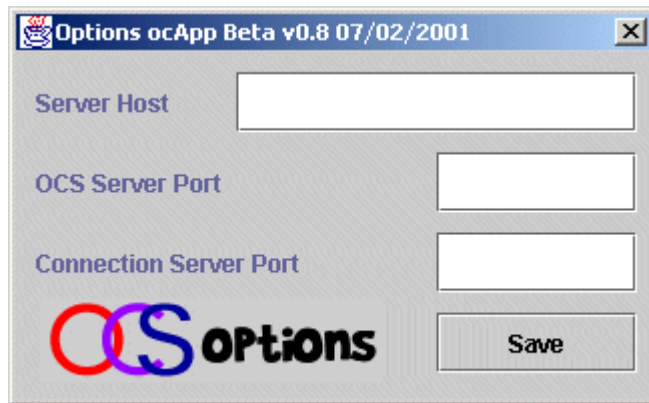


Figure 2

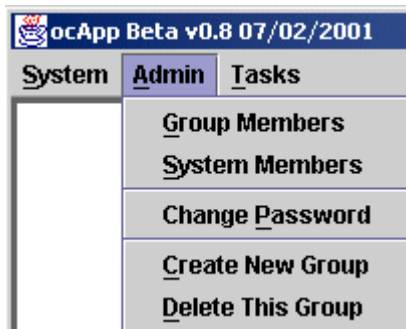
These values for these fields will be given to the user when they set-up an account on the system.

## Exit

The exit button closes the client application. It will confirm that the user wants to exit the program. Locked files will be set to unlocked and not uploaded when the user exits the application. It is advised to use method of exiting the program and not killing the process as file locks will remain using this method.

---

## Admin Menu



The admin menu allows user and group administrative tasks to be carried out.

### Group Members

The group members' menu item displays a dialog shown in Figure 3. The group members shows the current members of the group. That is, those that can login to the group.

#### Remove From Group

The remove from group menu item allows the current user to remove the selected user from the system. The connected user level must be lower than the group member that the connected user wants to delete. If this is not the case the function will fail.

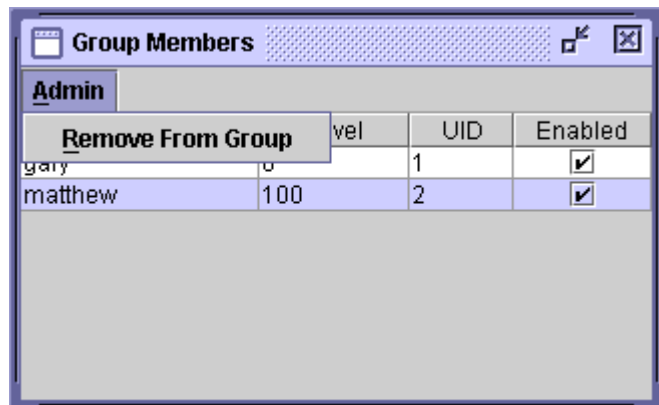


Figure 3

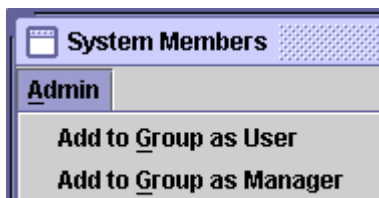


Figure 4

### System Members

The system members' menu item shows a dialog very similar to the Group Members dialog. Contains information about the users that are on the system. The menu options (shown in Figure 5) allow the user to add system members to the current group.

#### Add to Group as User

Adds the current selected user as a member of the current group. The connected user must be a group manager to carry out this task.

#### Add to Group as Manager

Adds the currently selected user as a manager of the current group. The connected user must be owner of the group to carry out this task.

## Change Password

Allows the user to change their system password. When the user clicks the change dialog box appears (shown in Figure 5). If this is the first time logged in as a new user the current password should be left blank. The new password is entered twice in New Password and Again text boxes to ensure that the user enters the password correctly.

A screenshot of a Windows-style dialog box titled "Change Password ocApp Beta v0.8 07/02/2001". It contains three text input fields labeled "Current Pass", "New Password", and "Again". Below the fields is the "oS client" logo, consisting of a red 'O' and a blue 'S' followed by the word "client" in a bold, italicized font. To the right of the logo is an "Update" button.

Figure 5

## Create New Group

Allows the user to create a new group. The connected user becomes the owner of the new group. The create new group dialog box is shown in Figure 6. The name is the name of the new group that is used to login to the group from the Login dialog. The comments is information about what the group is about. The comments for a group are stored on the database web output page.

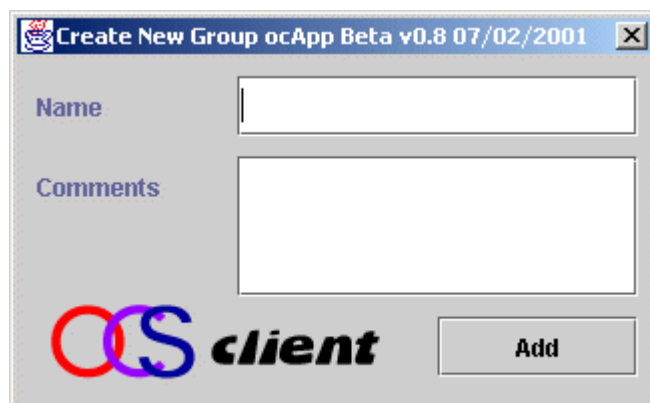
A screenshot of a Windows-style dialog box titled "Create New Group ocApp Beta v0.8 07/02/2001". It contains two text input fields: "Name" and "Comments". Below the fields is the "oS client" logo, consisting of a red 'O' and a blue 'S' followed by the word "client" in a bold, italicized font. To the right of the logo is an "Add" button.

Figure 6

## Delete This Group

If the connected user is the group owner this option allows the deletion of the current connected group. The group will be completely deleted from the server database.

---

## Task Menu



The task menu allows tasks to be assigned to users. Any user can assign tasks to another user. The tasks are similar to email in that they have a sender and recipient and a message. Tasks also have started and completed time flags.

### View Tasks

The view tasks menu item brings up a new window in the internal frame (shown in Figure 7). The user can select a task from the view task list and display a task in the task dialog (shown in Figure 8 but without modifiable fields). The connected user can view any task assigned to anyone. The username displayed in the view task dialog is the username the task has been assigned to. In the view task area it is possible to update the start and completed times by clicking on the respective check box items. If you are the owner of this task the delete button will remove the task from the system.

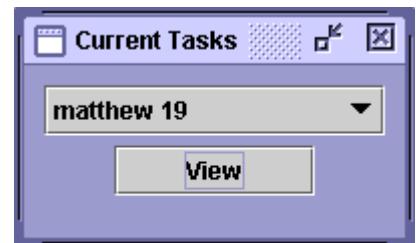


Figure 7

### Create New Task

Allows the connected user to create a new task and assign it to another user. Selecting this menu item will display a dialog box (shown in Figure 8). From here it is possible to create a new task and assign it to a user. The user must press the 'Save' button to save the task before they use 'Close' or the X button to exit the dialog.

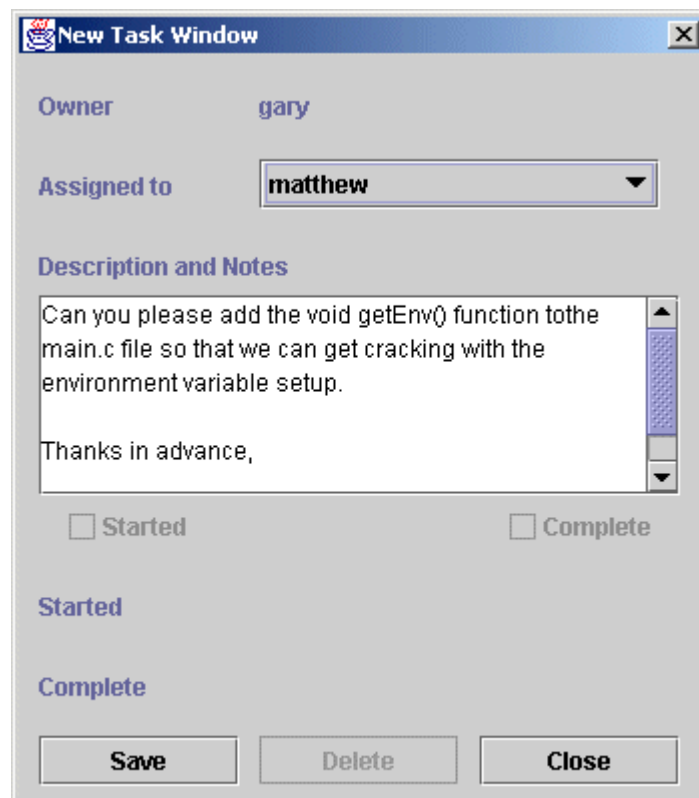


Figure 8




---

## File Tree

The file tree (shown in figure 9,12 and 13) contains the files and directories for the connected group. When the user is not connected the file tree is empty.

### Tree Icons

The following three tree icons are used

-  This icon represents a directory. Directories contain files.
-  Represents a file that is accessible (not locked).
-  Represents a file that is locked by another user.

### Tree Menu

The tree menu is accessed by selecting an item in the tree frame (single left clicking mouse button and highlighting the item) and then right click the mouse button. Figure 9 shows the tree menu and its options on a file.

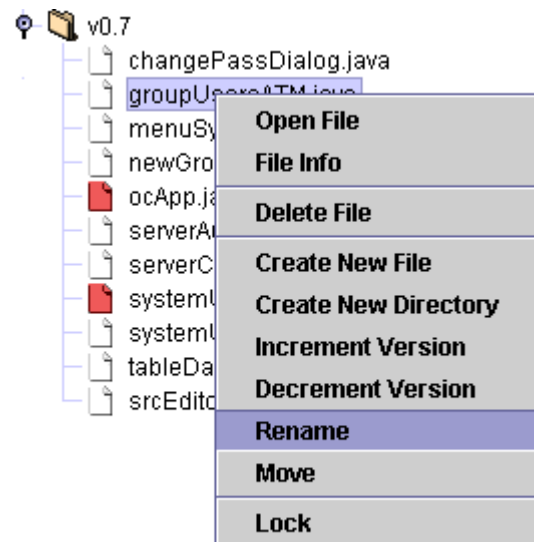


Figure 9

#### Open File

This will open the selected file. Double clicking the file carries out the same action as this.

#### File Info

The file info menu item displays a new dialog with information about the selected file. The file info dialog can be used to modify the comments of a file. The comments can be used to describe the file. Pressing the 'update comments' on the file info dialog will save the comments. It is not necessary for a file to be locked to update the comments and any group user can modify the comments for a file.

#### Delete File

Providing the user is the owner of a file or owner of the group they can delete the file. This removes it from the database and the tree.

#### Create New File

This menu item creates a new dialog (shown in figure 10) that allows the user to create a new file. The file will be inserted into the same directory as the selected file or directory the user has highlighted.

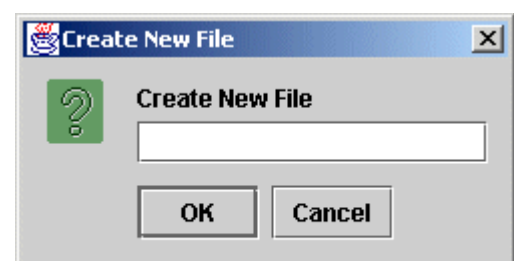


Figure 10

The text box in the create new file dialog box is for entering the name of the new file.

## Create New Directory

Creates a new directory. This option displays a dialog similar to that shown in Figure 10. The directory will be created in the directory of the selected file or selected directory.

## Increment Version

Increments the selected file version by 1. The current file version can be seen by looking at the file info.

## Decrement Version

Decrements the selected file version by 1. The current file version can be seen by looking at the file info.

## Rename

The rename options allows you to change the name of a file. A dialog similar to that shown in Figure 10 will be displayed.

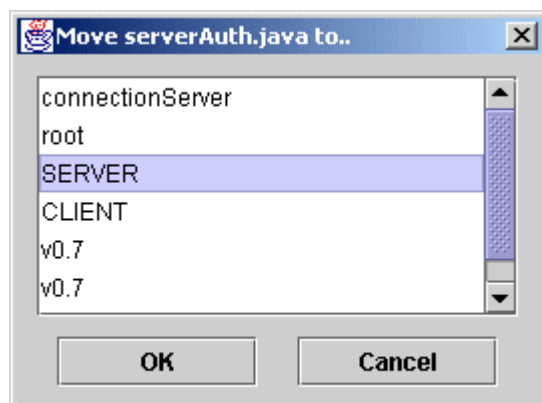


Figure 11

## Move

Move option allows the user to move the selected file to a different directory. This menu item will open a new dialog window (shown in Figure 11). Selecting a directory in the item list and clicking 'OK' will move the file to the selected directory.

## Lock

Will lock the selected file. The file icon will change and the file will not be accessible to any other user while the file is locked unless the lock is forced unlocked by a group manager or owner.

## Unlock

Unlocks a locked file. The unlock menu item is only shown when a locked file has been highlighted (shown in Figure 12). Providing the connected user is the owner of the lock the file will be unlocked.



Figure 12

## Force Unlock

The option is available to group owners and managers to force the unlock of a file. If the client locking the file has it opened the remote client will have its editor window closed without saving any updates.

## Delete Directory

The delete directory option (shown in Figure 13) allows the deletion of directories. Deleting a directory recursively deletes all files off the directory tree.



Figure 13

---

## Desktop

The desktop pane displays multiple windows (shown in appendix I). The desktop pane includes a chat console and editing windows. It is also used to list group tasks, group users and system users.

### Editing Window

An editing window is any of the windows that are opened when a file is being editing. The editing window is shown in figure 14.

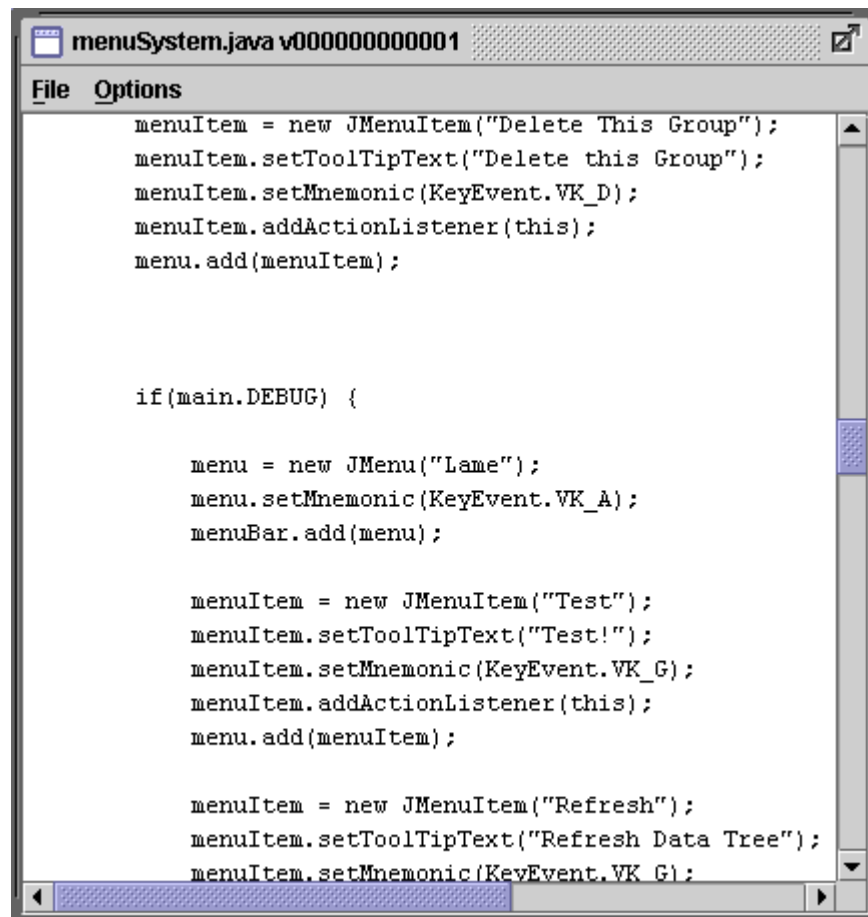


Figure 14

The text in an editing window is that which is stored in the file that the data originates from. When an editing window is open the file is locked and cannot be accessed by any other users.



## Editing Window File Menu

The editing window menu options. The file options are shown in Figure 15.

### Upload

This option uploads the file to the system.

### Upload + Version Increment

Uploads the file to the server and increments the file version.

### Upload + Close

Uploads the file to the server and closes this editing window.

### Upload + Version Increment + Close

Uploads the file, increments the version and closes this editing window.

### Close

Closes the editing window without uploading the file to the server.

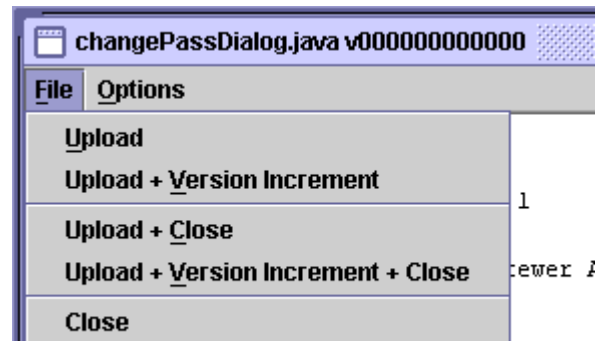


Figure 15

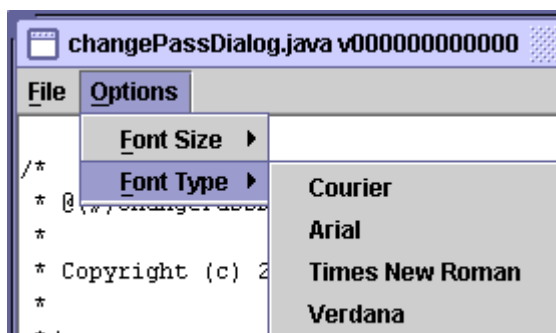


Figure 16

## Editing Window Options Menu

The options menu allows the user to change the way the text area is displayed. With this option the user can change the type of font used to display the file and the font size. The options menu is shown in Figure 16.

# Limitations

The current limitations of the OCS Client application.

- Files and usernames cannot have spaces or commas in them.
- Cannot move or rename directories.